

VICTORIAN ASH PRODUCT SELECTOR

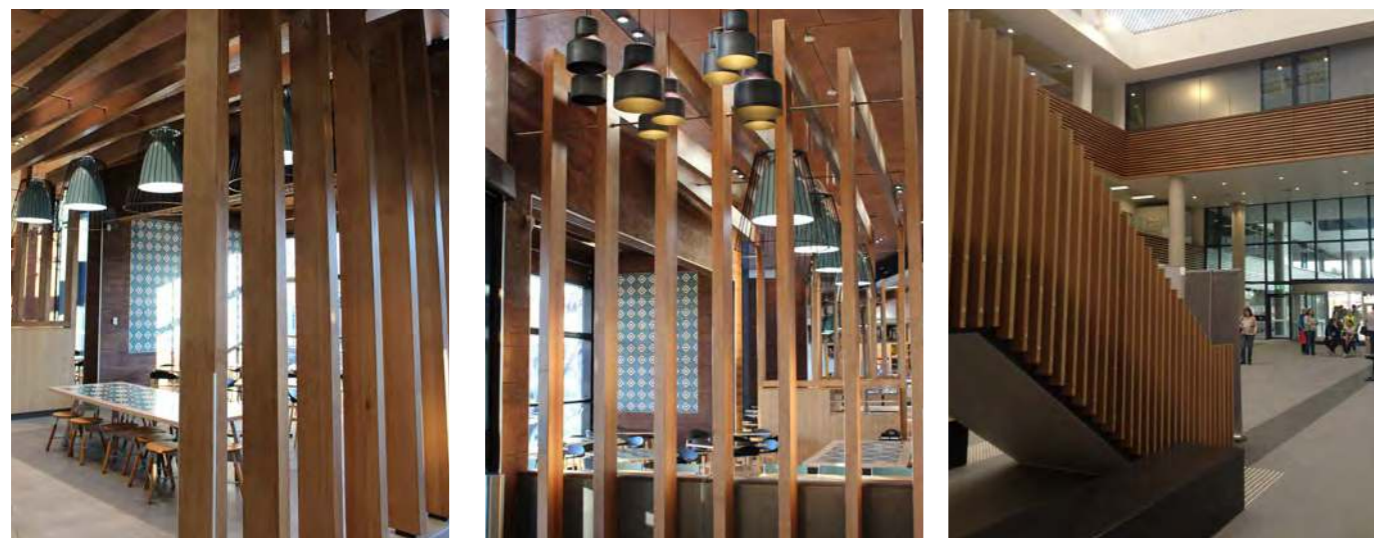


Mitsuori Architects





austim is the WA timber specialist you can trust. Family owned and run since 1985, we provide the craftsmen, tradesmen and builders of Perth with unique, decorative timber solutions.



Our aim is to deliver timber solutions that exceed expectations and lead to successful projects. We offer a complete timber resource; from timber decking and cladding, to posts and beams, flooring, furniture and joinery timber, specialist recycled timber and much more.

Note: we specialise in timber supply only, leaving installation to carpenters, joiners and floor layers. We can recommend quality tradesmen in all aspects of timberwork.

With everything from full pack lots to individual pieces and a basic range of timber-related hardware on hand, Austim is number one in Perth, trusted by:

- Builders and tradespeople
- Joiners and furniture makers
- Cabinetmakers and shopfitters.

Customers enjoy quick and easy access to an array of timber products at our massive 16,000sqm site in Landsdale. This includes unique exotic species from around the world you won't find anywhere else in Perth, like American Black Walnut, White Oak and Burmese Teak (to name a few). Our state of the art computer systems provide real-time stock information and job

progress, and with our unrivalled knowledge and steadfast commitment to quality (ISO 9001 Quality Assured), we'll recommend the right timber for your unique project.

We work closely with Perth's top architects to assist in specification and impart our knowledge to all parties involved in the building process.

- Timber & composite decking
- Wall cladding & ceiling lining
- Timber fins, battens and screening
- Timber posts & timber beams
- Specialty sawn timbers
- Dressed timber
- Specialty recycled timber
- Thermally modified timber.

Our huge warehouse has been specially designed to provide ample room for semis, trucks and utes so you can come and go with ease. And if you can't pick it up, we'll happily deliver to your site via crane truck.

Australian Grown Sustainable Hardwood. GOODWOOD

Our Victorian Ash is produced by Australian Sustainable Hardwoods (ASH) and branded nationally as “GOODWOOD”. Demand GOODWOOD Vic Ash to ensure your timber is supplied on a controlled, environmentally responsible and sustainable basis.

Beyond just good looks, timber is becoming increasingly attractive to architects, developers and builders with a focus on environmental awareness and sustainability. GOODWOOD by ASH comes from regenerated forests that are certified and controlled by the Victorian Government, and comes complete with Chain of Custody Certification for Certified Wood and Forest Products (AFS PEFC) which allows the product to be tracked from origin to end-use. Importantly we can ensure certainty of supply because ASH is also the largest hardwood sawmill in Australia processing 155,000m3 of sawlog per annum in a modern and efficient operation utilising the latest in manufacturing technology.



| Embodied energy for common building materials | |
|---|---------------------------|
| Material | PER embodied energy MJ/kg |
| Stabilised earth | 0.7 |
| Kiln dried sawn hardwood | 2.0 |
| Clay bricks | 2.5 |
| Kiln dried sawn softwood | 3.4 |
| Plasterboard | 4.4 |
| Cement | 5.6 |
| Plywood | 10.4 |
| MDF (medium density fibreboard) | 11.3 |
| Laminated veneer Lumber | 11.0 |
| Glass | 12.7 |
| Galvanised steel | 38.0 |
| PVC (polyvinyl chloride) | 80.0 |
| Plastics – general | 90.0 |
| Synthetic rubber | 110.0 |
| Aluminium | 170.0 |

Source: Lawson 1996.



Growing trees absorb carbon dioxide from the atmosphere and store the carbon so efficiently that about half the dry weight of a tree is carbon. This carbon remains locked up in the wood even when we use it for building products. Further to its green credentials the production of trees into wood products uses less energy compared to many other traditional building products.

FEATURES AND BENEFITS OF GOODWOOD

Straight, stable and consistent.

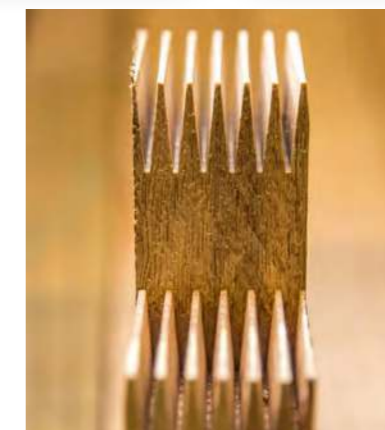
Victorian Ash is considered a medium density hardwood comprising of two species, Eucalyptus delegatensis and Eucalyptus regnans which are visually identical and share very similar properties. Colour naturally is pale pink to pale straw, and it will take stains or paints very well. Density is quoted as 680kg/m3 dry, with in service movement considered to be Low. It is quarter sawn, illustrated by growth rings being perpendicular to the face of the board when looking at the end profile. This creates a more stable product with an even and consistent grain. GOODWOOD is carefully air-dried and then kiln dried to an approximate 9-11% moisture content.

FEATURES

- Quality sustainable Australian Hardwood sourced from PEFC certified forests
- Environmentally friendly
- Energy efficient, natural material
- Kiln Dried and straight lined edged, Quartersawn for dimensional stability
- Ultra sound scanned
- Strong and durable
- Stocked in WA for quick delivery
- Long lengths
- Natural insulation
- Flexible with a wide range of possible applications
- Available H3 treated (IronAsh)
- Available finger-jointed and/or laminated
- Timeless quality and appearance
- Can be refinished after years of service.

APPLICATIONS

- Window frames and doors
- Staircases
- Furniture
- Joinery
- Flooring
- Cladding & Lining
- Battens & Fins
- Structural Framing (SUPASPAN, SUPALAM & SUPABEAM)



GOODWOOD SAWN MATERIAL

Straight, stable and consistent.

Austim hold in stock an extensive range of Sawn Select Grade Victorian Ash, this comes in random length 0.9m to 5.4m averaging near 4.0m. We sell this by the individual piece or by the full pack to meet all variety of customer requirements. Our customers use this in a wide range of applications from furniture making to office fitout and custom joinery to name a few. Select grade presents extremely well, it has a clean look with few natural growth characteristics. Standard Grade is available to order in pack quantities only. Austim predominately sell this material as "sawn" but we do have in-house machining facilities to provide your timber dressed (machining charges and leadtimes will apply).

The wide range of sizes and lengths available and its consistency of size (full size and very straight) make it an easy to use choice for manufacturers and craftsmen alike. Note larger sizes than those listed below are possible in laminated material, see the next page.

| Sawn Sizing mm | Achievable Finished Size mm |
|----------------|-----------------------------|
| 75x25 | 65x19 |
| 100x25 | 90x19 |
| 125x25 | 115x19 |
| 150x25 | 140x19 |
| 175x25 | 165x19 |
| 200x25 | 190x19 |
| | |
| 75x38 | 65x32 |
| 100x38 | 90x32 |
| 125x38 | 115x32 |
| 150x38 | 140x32 |
| 175x38 | 165x32 |
| 200x38 | 190x33 |
| | |
| 75x50 | 65x42 |
| 100x50 | 90x42 |
| 125x50 | 115x42 |
| 150x50 | 140x42 |
| 175x50 | 165x42 |
| 200x50 | 190x42 |



GOODWOOD LAMINATED COMPONENTS

The highlight of many domestic and commercial spaces, GOODWOOD laminated material will provide functionality, adaptability and durability.

Produced from only the very best Victorian Ash Select Grade timber. Full lengths are laminated together using state of the art equipment and low voc glues to produce wide section boards not attainable direct from the log. These specific products are designed for use in internal or weather protected areas. All these products are sized and face sanded thus requiring minimal further work prior to installation or polishing.

Stocked Items

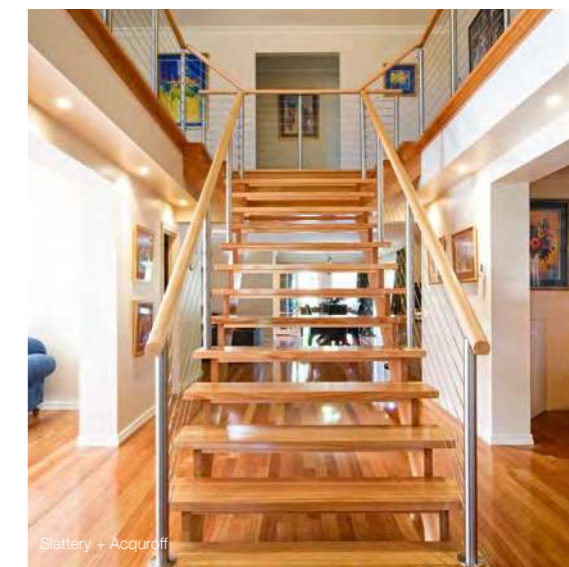
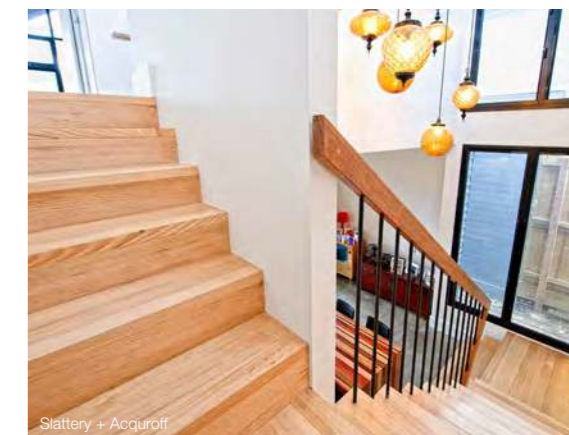
(0.9-5.4m random lengths, held in stock)

| | |
|----------------------------|---------|
| 90x90mm | (2 lam) |
| 190x19mm | (2 lam) |
| 240x33mm | (2 lam) |
| 285x33mm | (3 lam) |
| 356x33mm (3.6m only) | (5 lam) |
| 240x43mm | (2 lam) |
| 285x43mm | (3 lam) |
| 356x43mm (3.0 & 3.6m only) | (5 lam) |

Custom Manufactured

(0.9-3.6m lengths, leadtimes will apply. Note: larger and longer lengths are possible which may require finger jointing, and be subject to minimum volumes, please contact us to discuss)

| |
|----------|
| 285x60mm |
| 310x60mm |
| 340x60mm |
| 285x80mm |
| 310x80mm |
| 340x80mm |



GOODWOOD DECORATIVE PROFILES

IRONASH – H3 TREATED

GOODWOOD Vic Ash is the perfect timber for internal fitout and joinery. Clean looking, natural, durable and readily available. Naturally light in colour, so can be easily stained to suit any palette.

At Austim we carry a huge inventory of GOODWOOD so that when you need it, you can have it. Whether you need a basic square dressed board, a bullnose skirting in a wide profile or a more detailed Victor lining board we can produce it.

Come in and talk to us about your specific requirements, our in-house machining facilities are flexible enough to produce small job lots of just 20 lineal meters through to large 20,000 lineal meter jobs for commercial applications. Being done on site we can closely control the quality to ensure it meets all expectations.

Particularly useful for the larger volume jobs is our ability to factory coat most products though we still recommend a final on-site coat will be necessary. (we use Elements Protector Oil, see indicative colours images below)



Colours and profiles above are indicative only.

GOODWOOD Victor Lining

For walls, ceilings & eaves
110x14mm random lengths

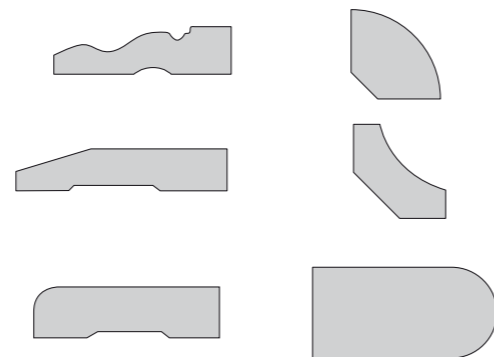


GOODWOOD Tango Lining

For walls, ceilings & eaves
133x12mm random lengths
Dressed & Raw
Dressed & Coated



Other GOODWOOD Profiles



Beautiful. Strong. Durable. IronAsh perfectly answers your exterior timber needs.

Victorian Ash has never been considered durable enough to use in external situations. Exquisitely beautiful, yes. Affordable, yes. But too prone to the weather to be practical? Until now that is, new IronAsh uses innovative technology to place a unique combination of water-based additives deep into the core of GOODWOOD Victorian Ash. Treated to H3 classification, IronAsh can now be used in any build to allow the continuous flow of timber design from inside to out. That's why IronAsh is a great choice for your building project, being able to specify the same wood internally and externally now ensures a seamless beautiful finish and absolute customer satisfaction.

A tried and tested product. Guaranteed to perform.

IronAsh is the result of years of careful research by Australian Sustainable Hardwoods and their partners. The Tru-Core treatment process that creates this remarkable product has over ten years history of proven durability in the USA. With over 2 years of local research and development with Victorian Ash the preservative has been registered with the APVMA and a code mark developed for the True-Core process treated wood that exceeds the penetration required by the Australian Standards AS1604-1. True-Core is an environmentally responsible, water-based treatment that includes insecticides to combat pests and azoles to fight decay. It gets deep into the core of the wood so you can cross cut, trim and mitre without having to re-apply a preservative. ASH is so sure of their new IronAsh that it comes with a 25 year guarantee that it will exceed or meet all Australian "H3" standards for exterior timber decay and termites.

Guaranteed to Perform

| | Tru-Core® Process |
|--|-------------------|
| Full sapwood penetration | ✓ |
| Heartwood penetration | ✓ |
| Exceeds Australian Standards by +20% further penetration | ✓ |
| Durable protection | ✓ |
| Listed by CodeMark | ✓ |
| For both exterior and interior use | ✓ |
| Non Solvent Carrier | ✓ |
| Patented penetration system | ✓ |
| Preservative is registered | ✓ |

IRONASH ASPECT CLADDING

Beautiful. Strong. Durable. IronAsh Aspect Cladding perfectly answers your exterior timber needs. Integrating seamlessly with GOODWOOD used internally.

Using innovative technology now Victorian Ash can be used throughout a home, and outside too instead of having to consider dense heavy species externally. IronAsh Aspect Cladding uses a unique treatment, non-toxic Tru-Core treating deep into the core of the wood. Durable to H3 classification IronAsh becomes one of the most affordable hardwoods fit for external use.

At Austim we go a step further by offering one or two factory coatings to protect and colour your Cladding with potentially just one site coat you will save both time and money.



IronAsh Aspect Cladding

105x19mm 5.4m lengths



Dressed & Raw
Dressed & Coated



Colours and profiles above are indicative only.

IRONASH ASPECT BATTENS AND FINNS

Suitable for weather exposed situations.

Using innovative technology, now you can specify GOODWOOD Victorian Ash throughout a home, and outside too - seamlessly integrating the beauty of this gorgeous product inside and out. It's all thanks to our unique, non-toxic Tru-Core treatment that gets deep into the core of the wood. We call this IronAsh. Durable to H3 classification and easily stained to match your decor needs, IronAsh is one of the most affordable hardwoods fit for exterior use. In fact Austim can offer 6 factory applied colours to our IronAsh range, making your work at home or on-site quicker, easier and more cost efficient. (note size limitations do apply) IronAsh Aspect 'fins and battens' are finger jointed and wider sections are also laminated using state of the art low-voc adhesives so performance is guaranteed even when used externally. Note: even though IronAsh is H3 durable good detailing is important to keep and job looking its best, see the IronAsh Design Guide on our website www.austim.com.au

IronAsh Aspect Battens

5.4m, arrised corners Great for separating outdoor areas

65x19mm

40x32mm

60x32mm

80x32mm



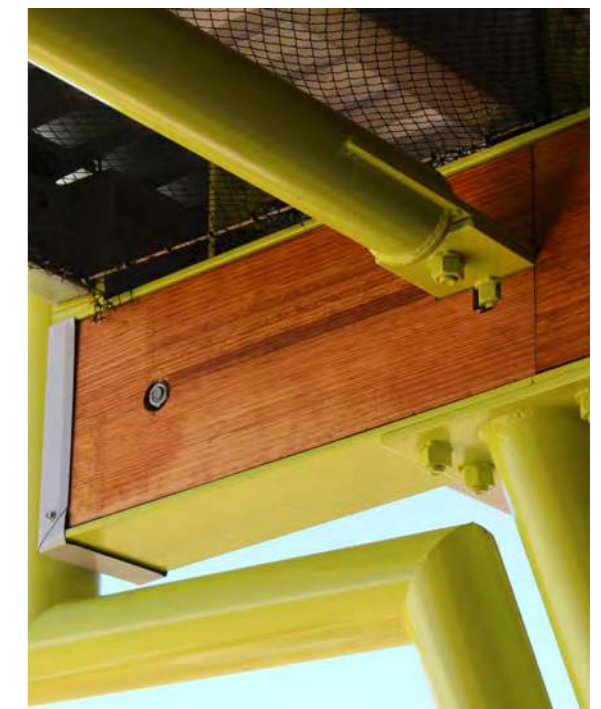
IronAsh Aspect Fins

5.4m, arrised corners Ideal for cladding steel support beams externally or internally

142x33mm

214x33mm

285x33mm



(Note: larger size of Aspect Battens & Fins are available but will be subject to leadtimes and also minimum volumes, please contact us to discuss)



WA's most unique timber range at Austim.

Furniture & Joinery Timber + Timber Decking + Composite Decking +
Flooring + Structural Posts & Beams + Timber Cladding & Lining +
Screening + Treated Pine + Recycled Timbers + Marine Timber +
Thermally Modified + Timber Coatings + Dressed Timber + Hardware.

252 Gnangara Rd, Landsdale, WA 6065
P 6558 1266 E sales@austim.com.au

austim.com.au

